



NC DEPARTMENT OF TRANSPORTATION  
 DIVISION OF HIGHWAYS  
 BRIDGE MANAGEMENT UNIT

ATTENTION

PRIORITY MAINT. TO CONCRETE CAPS.  
 VERTICAL CLR. CHECKED

# BRIDGE INSPECTION REPORT

INSPECTION TYPE: Routine Inspection

COUNTY GASTON BRIDGE NUMBER 350073 INSPECTION CYCLE 2 YRS 23.4  
 ROUTE NC7 ACROSS I-85 M.P. 0

LOCATION 0.7 MI. E. JCT. SR2201

SUPERSTRUCTURE REINFORCED CONCRETE DECK ON I-BEAMS

SUBSTRUCTURE ABUTMENTS:RC SPILL THROUGH, INTERIOR BENTS:RC POST & BEAM

1@82,1@82,1@82, 1@76

SPANS

LONGITUDE 81° 5' 19.47"

LATITUDE 35° 15' 48.68"

INSPECTION DATE 08/05/2014

PRESENT CONDITION FAIR

PRESENT POSTING N NOT POSTED

PROPOSED POSTING

OTHER SIGNS PRESENT NONE

Fracture Critical	<u>No</u>
Temporary Shoring	<u>No</u>
Scour Critical	<u>No</u>
Scour POA	<u>No</u>



SIGN NOTICE ISSUED FOR	NUMBERED REQUIRED
<u>No</u> WEIGHT LIMIT	<u>          </u>
<u>No</u> DELINEATORS	<u>          </u>
<u>No</u> NARROW BRIDGE	<u>          </u>
<u>No</u> ONE LANE BRIDGE	<u>          </u>
<u>No</u> LOW CLEARANCE	<u>          </u>

WEST APPROACH

NATIONAL BRIDGE INVENTORY----- STRUCTURE INVENTORY AND APPRAISAL

Run Date: 09/16/2014

**IDENTIFICATION**

(1) STATE NAME -NORTH CAROLINA BRIDGE **350073**  
 (8) STRUCTURE NUMBER(FEDERAL) 00000000710073  
 (5) INVENTORY ROUTE (ON/UNDER) - ON 31000070  
 (2) STATE HIGHWAY DEPARTMENT DISTRICT 1  
 (3) COUNTY CODE 71 (4) PLACE CODE 39480  
 (6) FEATURE INTERSECTED - I-85  
 (7) FACILITY CARRIED NC7  
 (9) LOCATION 0.7 MI. E. JCT. SR2201  
 (11) MILEPOINT 0  
 (16) LAT 35° 15' 48.68" (17) LONG 81° 5' 19.47"  
 (98) BORDER BRIDGE STATE CODE PCT SHARE  
 (99) BORDER BRIDGE STRUCTURE NO

SUFFICIENCY RATING = 82  
 STATUS = Functionally Obsolete

**CLASSIFICATION** **CODE**

(112) NBIS BRIDGE SYSTEM - YES  
 (104) HIGHWAY SYSTEM Is on the NHS 1  
 (26) FUNCTIONAL CLASS - Other Principal Arterial 14  
 (100) STRAHNET HIGHWAY - Not a STRAHNET Route 0  
 (101) PARALLEL STRUCTURE - No Parallel Structure N  
 (102) DIRECTION OF TRAFFIC - 2-way Traffic 2  
 (103) TEMPORARY STRUCTURE -  
 (110) DESIGNATED NATIONAL NETWORK - Not on the National Network 0  
 (20) TOLL On Free Road 3  
 (31) MAINTAIN - State Highway Agency 01  
 (22) OWNER - State Highway Agency 01  
 (37) HISTORICAL SIGNIFICANCE - Not Eligible 5

**STRUCTURE TYPE AND MATERIAL**

(43) STRUCTURE TYPE MAIN: Steel  
 TYPE - Stringer Mutlibeam or Girder CODE 302  
 (44) STRUCTURE TYPE APPR :  
 TYPE - CODE 0  
 (45) NUMBER OF SPANS IN MAIN UNIT 4  
 (46) NUMBER OF APPROACH SPANS 0  
 (107) DECK STRUCTURE TYPE - 1 CODE  
 (108) WEARING SURFACE / PROTECTIVE SYSTEM :  
 (A) TYPE OF WEARING SURFACE - CODE  
 (B) TYPE OF MEMBRANE - CODE  
 (C) TYPE OF DECK PROTECTION - CODE

**CONDITION** **CODE**

(58) DECK 7  
 (59) SUPERSTRUCTURE 5  
 (60) SUBSTRUCTURE 6  
 (61) CHANNEL & CHANNEL PROTECTION N  
 (62) CULVERTS N

**LOAD RATING AND POSTING** **CODE**

(31) DESIGN LOAD HS 20 + MOD 6  
 (63) OPERATING RATING METHOD - Load Factor 1  
 (64) OPERATING RATING - HS-47 85  
 (65) INVENTORY RATING METHOD - Load Factor 1  
 (66) INVENTORY RATING - HS-28 51  
 (70) BRIDGE POSTING - No Posting Required 5  
 (41) STRUCTURE OPEN, POSTED ,OR CLOSED A  
 DESCRIPTION - Open, No Restriction

**AGE AND SERVICE**

(27) YEAR BUILT 1960  
 (106) YEAR RECONSTRUCTED  
 (42) TYPE OF SERVICE : ON - Highway - Pedestrian  
 UNDER - Highway CODE 51  
 (28) LANES: ON STRUCTURE 4 UNDER STRUCTURE 6  
 (29) AVERAGE DAILY TRAFFIC 8100  
 (30) YEAR OF ADT 2012 (109) TRUCK ADT PCT 12%  
 (19) BYPASS OR DETOUR LENGTH 0 MI

**APPRAISAL** **CODE**

(67) STRUCTURAL EVALUATION 5  
 (68) DECK GEOMETRY 9  
 (69) UNDERCLEARANCES, VERTI & HORIZ 3  
 (71) WATERWAY ADEQUACY N  
 (72) APPROACH ROADWAY ALIGNMENT 8  
 (36) TRAFFIC SAFETY FEATURES 0000  
 (113) SCOUR CRITICAL BRIDGES N

**GEOMETRIC DATA**

(48) LENGTH OF MAXIMUM SPAN 80 FT  
 (49) STRUCTURE LENGTH 322 FT  
 (50) CURB OR SIDEWALK: LEFT 5.1 FT RIGHT 5.1 FT  
 (51) BRIDGE ROADWAY WIDTH CURB TO CURB 68.08 FT  
 (52) DECK WIDTH OUT TO OUT 80.46 FT  
 (32) APPROACH ROADWAY WIDTH (W/SHOULDERS) 64 FT  
 (33) BRIDGE MEDIAN - No Median CODE 2  
 (34) SKEW 48° (35) STRUCTURE FLARED 0  
 (10) INVENTORY ROUTE MIN VERT CLEAR 999.9 FT  
 (47) INVENTORY ROUTE TOTAL HORIZ CLEAR 68.08 FT  
 (53) MIN VERT CLEAR OVER BRIDGE RDWY 999.9 FT  
 (54) MIN VERT UNDERCLEAR REF Highway 15.58 FT  
 (55) MIN LAT UNDERCLEAR RT REF Highway 7.5 FT  
 (56) MIN LAT UNDERCLEAR LT REF - 5 FT

**PROPOSED IMPROVEMENTS**

(75) TYPE OF WORK - CODE  
 (76) LENGTH OF STRUCTURE IMPROVEMENT  
 (94) BRIDGE IMPROVEMENT COST  
 (95) ROADWAY IMPROVEMENT COST  
 (96) TOTAL PROJECT COST  
 (97) YEAR OF IMPROVEMENT COST ESTIMATE  
 (114) FUTURE ADT 16200 (115) YEAR FUTURE ADT 2025

**INSPECTIONS**

(90) INSPECTION DATE 08/05/2014  
 (92) CRITICAL FEATURE INSPECTION : (93) CFI DATE  
 A) FRACTURE CRIT DETAIL - NO A)  
 B) UNDERWATER INSP - NO B)  
 C) OTHER SPECIAL INSP NO C)  
 SCOUR

**NAVIGATION DATA**

(38) NAVIGATION CONTROL - Not Applicable CODE N  
 (111) PIER PROTECTION - CODE  
 (39) NAVIGATION VERTICAL CLEARANCE 0  
 (116) VERT - LIFT BRIDGE NAV MIN VERT CLEAR FT  
 (40) NAVIGATION HORIZONTAL CLEARANCE 0 FT

Structure No: 350073

County: GASTON

Run Date:

Span Number	Feature Intersected	Inventory Route	Minimum Maximum Vertical Clearance	Milepoint	Base Highway Network	LRS Inventory Route	Toll	Functional Classification	Numer of Lanes	Average Daily Traffic	Year of Average Daily Traffic	Total Horizontal Clearance	See Note 1							
													Reference Feature	Minimum Vertical Underclearance	Right Lateral Underclearance	Left Lateral Underclearance	Underclearance Appraisal Grade	STRAHNET Highway Designator	Direction of Traffic	Highway System of Route
	6	5	10	11	12	13	20	26	28	29	30	47	54A	54	55	56	69	100	102	104
2	I 85 S	11000850	16	23.40	1	10085		11	3	59500	2011	48.5	H	15.83	7.5	5	9	1	1	1
3	I 85 N	11000850	15.83	23.40	1	10085		11	3	59500	2012	48.5	H	15.58	7.5	5	9	1	1	1

Note 1: Items 54, 55, and 56 are not reported FHWA under route data points but are collected for each under route to determine the minimum value for Underclearance Appraisal Item 69. The under route that generates the lowest Underclearance Appraisal value will be reported on the Facility Carried record.

BRIDGE MANAGEMENT UNIT

DATA ON EXISTING STRUCTURE

Run Date: 09/16/2014

COUNTY : GASTON                      DIVISION : 12                      DISTRICT : 1                      STRUCTURE NUMBER : 350073                      LENGTH : 322 FEET

ROUTE CARRIED : NC7                      FEATURE INTERSECTED : I-85

LOCATED : 0.7 MI. E. JCT. SR2201                      BRIDGE NAME :                      CITY : LOWELL

FUNC. CLASS : 14                      SYST.ON : FA                      SYST.UNDER : NFA                      ADT & YR : 8100 2012                      RAIL TYPE : LT 139 RT 139

BUILT : 1960                      BY : SHC                      PROJ : 8.16315                      FED.AID PROJ : I-85-1(6)20                      DESIGN LOAD : HS 20 + MOD

REHAB :                      BY :                      PROJ :                      ALIGNMENT : TAN                      SKEW : 138                      LANES : ON 4 UNDER 6

NAVIGATION : VC 0 FT                      HC 0 FT                      HT. CRN. TO BED : 0 FT                      WATER DEPTH : 0 FT

SUPERSTRUCTURE : REINFORCED CONCRETE DECK ON I-BEAMS

SUBSTRUCTURE : ABUTMENTS:RC SPILL THROUGH, INTERIOR BENTS:RC POST & BEAM

SPANS : 1 @ 82'-2", 1 @ 81'-10", 1 @ 82'-1", 1 @ 76'-1"

BEAMS OR GIRDERS : 12 LINES 36" I-BEAMS @ VARIOUS CENTERS

FLOOR : 6.25"RC/2"AWS                      ENCROACHMENT :                      DECK (OUT TO OUT) : 80.46 FT

CLEAR ROADWAY : 68.08 FT                      BETWEEN RAILS : 78.25 FT                      SIDEWALK OR CURB : LT 5.1 FT RT 5.1 FT

VERT.CL.OVER : 999.9 FT

INV.RTG. : HS-28                      OPE.RTG. : HS-47                      CONTR.MEMBER : Int.bmsSpB                      POSTED : SV                      TTST                      DATE

SYSTEM : Primary N.C. Route                      GREEN LINE ROUTE : Y

UNDER ROUTES AND CLEARANCES

Span	Route Description	Vertical Clearances		Horizontal Clearances		
		MMVC	MVC	Total	Left	Right
2	I 85 S	16	15.83	48.50	5	7.50
3	I 85 N	15.83	15.58	48.50	5	7.50

*Note: All measurements are in feet.*

REMARKS :

# BRIDGE INSPECTION RECORD AND SUMMARY

INSPECTION TYPE Routine Inspection  
 BRIDGE NO. 350073 COUNTY GASTON ROUTE NC7 OVER I-85  
 STRUCTURE TYPE REINFORCED CONCRETE DECK ON I-BEAMS  
 ROUTE ORIENTATION W - E SPANS

EVALUATION CODES: CRITICAL (C, 0 - 3); POOR (P, 4); FAIR (F, 5, 6); GOOD (G, 7 - 9)

INSPECTION ITEM				ITEM 61					
DECK ITEMS			GRADES						
1. WEARING SURFACE			G	45. CHANNEL & CHANNEL PROT.	a. WATERWAY				
2. DECK NO. OF EA TYPE SPN GRADE RATES SI & A ITEM 58			G		b. ALIGNMENT				
a. CONCRETE			4		c. SCOUR				
b. TIMBER					d. SLOPE PROT., RIP-RAP, DIKES, ETC.				
c. STEEL PLANK				50. APPROACH ROADWAY CONDITION				G	
d. OPEN GRID				51. APPROACH SLABS					
3. RAILING				52. PAINT SYSTEM				CODE I G	
a. CONCRETE				53. UTILITIES					
b. TIMBER				54. RESPONSE TO LIVE LOAD				G	
c. ALUMINUM			G	55. ESTIMATED REMAINING LIFE				16	
d. STEEL									
4. CURBS, WHEELGUARDS, PARAPETS, MEDIANS			F						
5. WALKWAYS (ON OR ATTACHED TO STRUCTURE)			G	60. REGULATORY SIGN NOTICE ISSUED				NO	
6. DECK EXP JTS. OR DEVICES. NO. OF EACH				61. PROMPT-ACTION NOTICE ISSUED				YES	
a. STEEL PL OR FINGER				62. PRESENTLY POSTED				NO	
b. MISC PREFAB				63. TOT. FIELD INSP TIME (INCLUDE WRITE UP)(MAN HR)				6	
c. COMPRESSION SEAL				64. TOTAL SNOOPER INSP. TIME (HRS)					
d. STANDARD JOINTS			3	F	65. TOTAL TRAFFIC CONTROL TIME (MAN HRS)				
e. OPEN JOINTS									
7. DECK DEBRIS (INCLUDES EXCESS SAND/GRAVEL)			G	70. SI&A GENERAL CONDITION RATINGS					
SUPER STR. (FM. 1 (90)B TRUSS) ITEM 59				a. DECK		ITEM 58	7		
10. LONGITUDINAL BEAMS OR GIRDERS			G	b. SUPERSTRUCTURE		ITEM 59	5		
11. LONGITUDINAL JOIST OR STRINGERS				c. SUBSTRUCTURE		ITEM 60	6		
12. INT. DIAP'S, X-FRAMES, BRACING & CONN'S			G	d. CHANNEL & CHANNEL PROT.		ITEM 61			
13. END DIAP'S, CURTAIN WALLS, & CONN'S			G	71. SI&A FIELD APPRAISAL RATINGS					
14. FLOOR BEAMS AND CONNECTIONS				a. WATERWAY ADAQUACY					
15. BEARING ASSEMBLIES (INCLUDING MISALIGN)			G	b. APPR. RDWY. ALIGNMENT				8	
16. DRAINAGE SYSTEM (ON STRUCTURE)			G						
17. MOVABLE SPAN MACHINERY				72. FIELD SCOUR EVALUATION					
SUB STR. ITEMS. ITEM 60 (INCLUDE SCOUR)				USE OF INSP. ACCESSIBILITY EQUIPMENT					
35. TIM SUB STR.				SNOOPER (CODE S, 4, OR N)		HRS	NO		
a. ABUT. & INT. BENT CAPS & RISERS				LADDER			NO		
b. PILES, POST, SILLS, & BRACING				BUCKET TRUCK			NO		
c. BULKHEADS, WING'S, & TIE BACKS				BOAT			NO		
36. CONC SUB STR.				OTHER			NO		
a. ABUT. & INT. BENT CAPS			F						
b. ABUT. & BENT COL'S BREASTWALLS			F						
c. ABUT. & INT. BENT PILES									
d. BACKWALLS, WING'S, RETAIN. WALLS			G						
e. ABUT. & BENT FOOTINGS & SILLS									
37. STEEL SUB STR.				SPECIAL INSPECTION REQUESTED FOR					
a. ABUT. & INT. BENT CAPS & RISERS									
b. PILES, BRACING, AND BULKHEADS									
38. FOUNDATION PILES TYPE MATERIAL				NOTE					
39. SLOPE PROT., RIP-RAP (INCLUDE DRAINAGE)			G						
40. FENDER SYSTEMS				80. INSPECTED BY:		<i>J.L. Rd</i>			
41. DRIFT				81. REVIEWED BY:					

Bridge I&A Form 1(82)H		<b>FIELD INSPECTION REPORT</b> <u>Bridge Inspeccion &amp; Analysis</u>	
<b>State of North Carolina</b> <b>Dept. of Transportation</b> <b>Division of Highways</b>			
Team Leader <b>DEREK RICKUS</b>			
Assisted By <b>EAP</b>			
Item No.	Grade		
1	G	ASPHALT WEARING SURFACE CRACKING OVER THE INT. BENT JOINTS.	
4	F	THE CONCRETE MEDIAN. IS DETERIORATED AND CRUMBLING.	
10	G	STEEL PAINTED IN RECENT PAST.	
10A	NO	NO CURVED GIRDERS	
36a	F	<p>THERE IS A 14" WIDE X 12" HIGH CONCRETE SPALL WITH RBAR EXDPOSED UNDER BAY 13 BENT 1 WEST FACE. ALSO THERE IS A 7' WIDE SPALL ALONG THE BOTTOM CORNER IN BAY 13 WITH REBAR EXPOSED.</p> <p>SPALL ALONG THE BOTTOM CORNER OF BENT 1 EAST FACE UNDER BAY 1 FOR 5' H/L TO 1/8" CRACKING ALONG THE BOTTOM CORNER OF BENT 2 IN BAY 1 FOR 4' ON THE WEST FACE.</p> <p>TH BOTTOM OF THE BENT 3 CAP BETWEEN COLUMNS 5 AND 6 HAS SPALLED 3' W X 3' L X 2 1/2" DEEP WITH RBAR EXPOSED. A PRIORITY MAINT. ISSUED.</p> <p>H/L TO 1/8" CRCK ALONG THE TOP CORNER OF BENT 3 CAP EAST FACE ADJ. GIRDER 9 FOR 3' ALONG THE TOP CORNER.</p>	
36b	F	COLUMN 7 AT BENT 3 HAS A CORNER SPALL ON THE SOUTH FACE FOR 7' HIGH X 5" WIDE WITH REBAR EXPOSED.	



# BRIDGE INSPECTOR'S RECOMMENDATION FOR MAINTENANCE REPAIRS

Bridge: 350073

County GASTON

Date: 08/05/2014

## These Repairs Should Be Made Within Twelve Months From Date Of This Inspection

MMS Code	Description of Function	Unit	Quantity	Remarks	Est. Cost
 3348	Maintain Concrete Substructure Components	LF	3	THE BOTTOM OF THE BENT 3 CAP BETWEEN COLUMNS 5 AND 6 HAS SPALLED 3' W X 3' L X 2 1/2" DEEP WITH RBAR EXPOSED. A PRIORITY MAINT. ISSUED.	
 3348	Maintain Concrete Substructure Components	LF	2	THERE IS A 14" WIDE X 12" HIGH CONCRETE SPALL WITH RBAR EXDPOSED UNDER BAY 13 BENT 1 WEST FACE. ALSO THERE IS A 7' WIDE SPALL ALONG THE BOTTOM CORNER	
3348	Maintain Concrete Substructure Components	LF	5	SPALL ALONG THE BOTTOM CORNER OF BENT 1 EAST FACE UNDER BAY 1 FOR 5'	
3348	Maintain Concrete Substructure Components	LF	4	H/L TO 1/8" CRACKING ALONG THE BOTTOM CORNER OF BENT 2 IN BAY 1 FOR 4' ON THE WEST FACE.	
3348	Maintain Concrete Substructure Components	LF	7	COLUMN 7 AT BENT 3 HAS A CORNER SPALL ON THE SOUTH FACE FOR 7' HIGH X 5" WIDE WITH REBAR EXPOSED.	
3348	Maintain Concrete Substructure Components	LF	3	H/L TO 1/8" CRCK ALONG THE TOP CORNER OF BENT 3 CAP EAST FACE ADJ. GIRDER 9 FOR 3' ALONG THE TOP CORNER.	

Key

 Priority Maintenance Item

 Critical Finding Item

 Priority Maintenance Level Not Determined

## BRIDGE INSPECTOR'S RECOMMENDATION FOR PRIORITY MAINTENANCE REPAIRS

Bridge: 350073                      County GASTON

THE FOLLOWING MAINTENANCE ITEMS HAVE BEEN SUBMITTED IN CONJUNCTION WITH A PRIORITY MAINTENANCE REQUEST

MMS Code	MMS Description	Quantity
3348	Maintain Concrete Substructure Components	3      LF
Location:		
Pier Cap	Bent/Span No.    3	CONCRETE CAP
Priority Level	Status	
Priority Maintenance	Division Bridge Maintenance Notification Received	
Submitted Date:	Submitted By:	Assisted By:
08/05/2014	DEREK RICKUS	ERIC PATTERSON
Details		
<p>THE BOTTOM OF THE BENT 3 CAP BETWEEN COLUMNS 5 AND 6 HAS SPALLED 3' W X 3' L X 2 1/2" DEEP WITH RBAR EXPOSED. A PRIORITY MAINT. ISSUED.</p>		

MMS Code	MMS Description	Quantity
3348	Maintain Concrete Substructure Components	2      LF
Location:		
Pier Cap	Bent/Span No.    1	CONCRETE CAP
Priority Level	Status	
Priority Maintenance	Division Bridge Maintenance Notification Received	
Submitted Date:	Submitted By:	Assisted By:
08/05/2014	DEREK RICKUS	ERIC PATTERSON
Details		
<p>THERE IS A 14" WIDE X 12" HIGH CONCRETE SPALL WITH RBAR EXDPOSED UNDER BAY 13 BENT 1 WEST FACE. ALSO THERE IS A 7' WIDE SPALL ALONG THE BOTTOM CORNER</p>		





ASPHALT WEARING SURFACE CRACKING OVER THE INT. BENT JOINTS.



THE CONCRETE MEDIAN. IS DETERIORATED AND CRUMBLING.



THERE IS A 14" WIDE X 12" HIGH CONCRETE SPALL WITH RBAR EXDPOSED UNDER BAY 13 BENT 1 WEST FACE. ALSO THERE IS A 7' WIDE SPALL ALONG THE BOTTOM CORNER



SPALL ALONG THE BOTTOM CORNER OF BENT 1 EAST FACE UNDER BAY 1 FOR 5'



BENT 1



H/L TO 1/8" CRACKING ALONG THE BOTTOM CORNER OF BENT 2 IN BAY 1 FOR 4' ON THE WEST FACE.



COLUMN 7 AT BENT 3 HAS A CORNER SPALL ON THE SOUTH FACE FOR 7' HIGH X 5" WIDE WITH REBAR EXPOSED.



THE BOTTOM OF THE BENT 3 CAP BETWEEN COLUMNS 5 AND 6 HAS SPALLED 3' W X 3' L X 2 1/2" DEEP WITH RBAR EXPOSED. A PRIORITY MAINT. ISSUED.



H/L TO 1/8" CRCK ALONG THE TOP CORNER OF BENT 3 CAP EAST FACE ADJ. GIRDER 9 FOR 3' ALONG THE TOP CORNER.

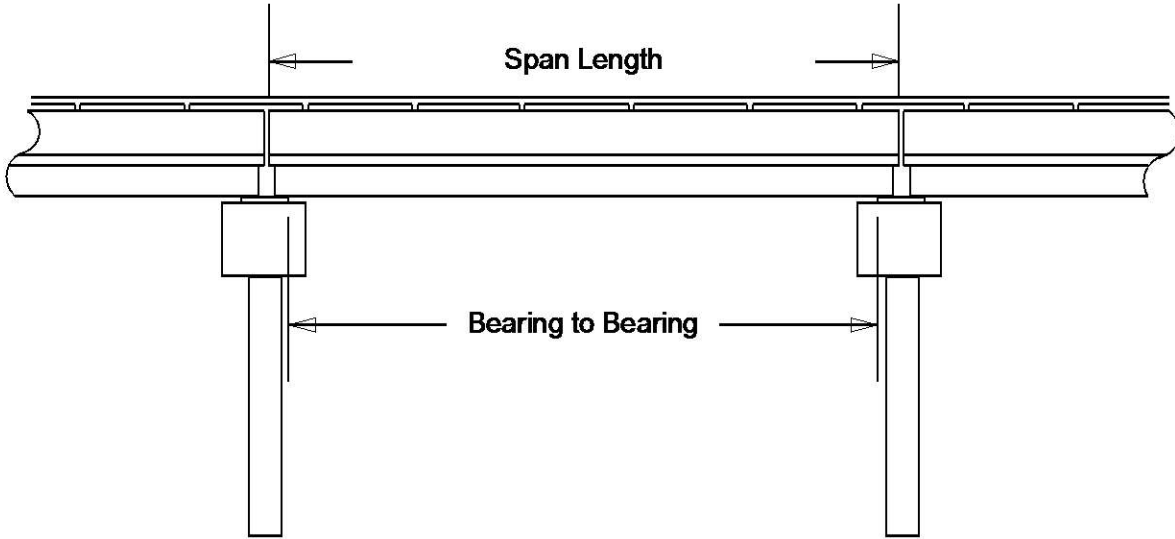


STEEL PAINTED IN RECENT PAST.

# Structure Data Worksheet

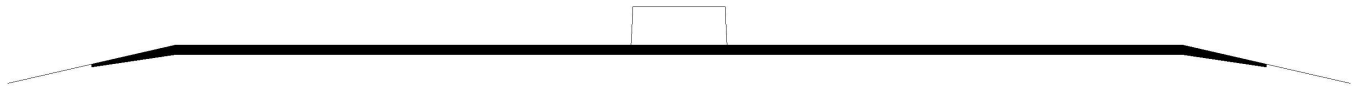
Spans

County: GASTON      Structure No: 350073      Date: 08/05/2014      Inspected By: DCR



Span No	Span Length	Bearing to Bearing	Comments
1	82.17	80.3'	
2	81.83	80.2'	
3	82.08	80.4'	
4	76.08	74.3'	NBIS = 315.5'

# Bridge Inspection Field Sketch



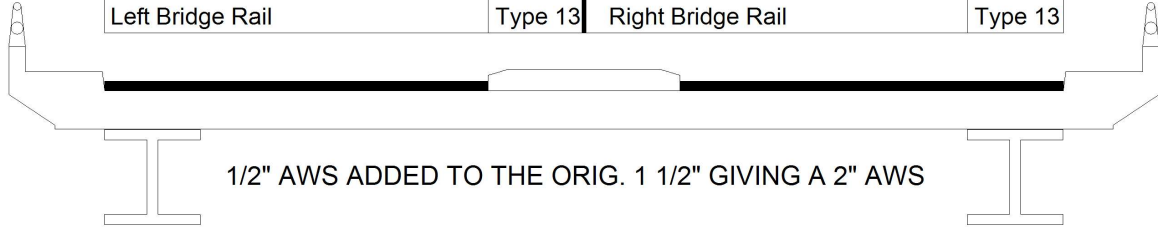
Left Lanes			
Roadway	38.00ft Wide	3 Paved Lanes	West Bound
Left Guardrail			
Right Guardrail			
Median	5.50ft Wide		
Right Lanes			
Roadway	26.17ft Wide	2 Paved Lanes	East Bound
Left Guardrail			
Right Guardrail			

VERIFIED BY ERIC PATTERSON ON 8-5-2014

<b>Title</b> APPROACH ROADWAY	<b>Description</b> APPROACH ROADWAY
<b>Bridge No:</b> 350073	<b>Drawn By:</b> DCR
<b>Date:</b> 8/25/08	<b>File Name:</b> S0286000126

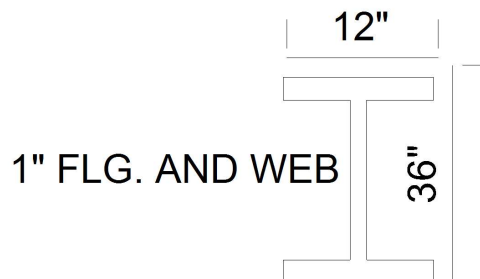
# Bridge Inspection Field Sketch

Deck Width/Out to Out	80.46ft	Wearing Surface	0.167'
Between Rails	78.25ft	Median Width	5.50ft
Curb Height	0.625'	Median Height	0.50ft
Top Rail to Deck/Wearing Surface	3.84ft	Left Guardrail Width	1.10ft
Clear Roadway	68.08ft	Right Guardrail Width	1.10ft
Left Bridge Rail	Type 13	Right Bridge Rail	Type 13



Measurements for Span #	1	SPANS 2 TO 4 SIMILAR	
Deck Thickness	0.52	Left Overhang	5.25
Top of Rail to Bottom of Beam	7.49	Right Overhang	5.25

Beam No	Beam Type	Spacing	Comments
1	Steel I Beam	6.50ft	
2	Steel I Beam	6.50ft	
3	Steel I Beam	6.50ft	
4	Steel I Beam	6.50ft	
5	Steel I Beam	6.50ft	
6	Steel I Beam	5.00ft	
7	Steel I Beam	6.50ft	
8	Steel I Beam	6.50ft	
9	Steel I Beam	6.50ft	
10	Steel I Beam	6.50ft	
11	Steel I Beam	6.50ft	
12	Steel I Beam		



VERIFIED BY ERIC PATTERSON ON 8-5-2014

NON TAPERED FLG.

**Title**  
TYPICAL SECTION

**Description**  
TYPICAL SECTION

Bridge No: 350073

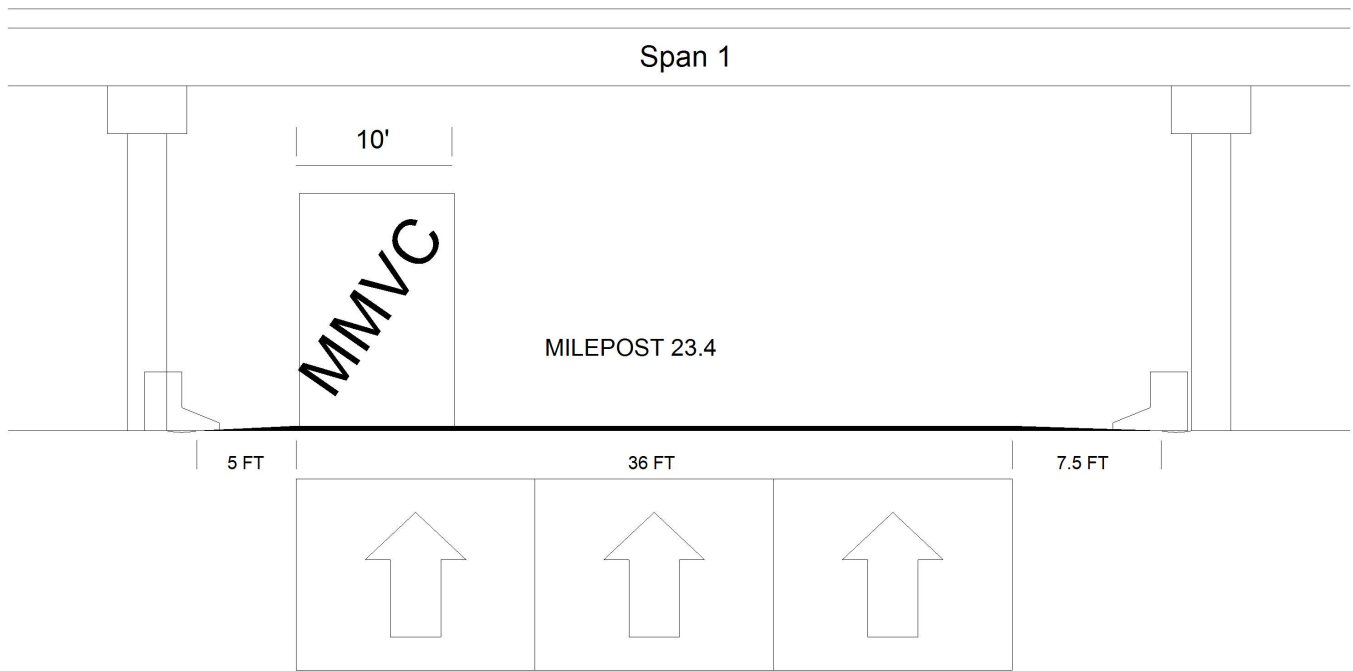
Drawn By: DCR

Date: 8/25/08

File Name: S0286000127



# Bridge Inspection Field Sketch



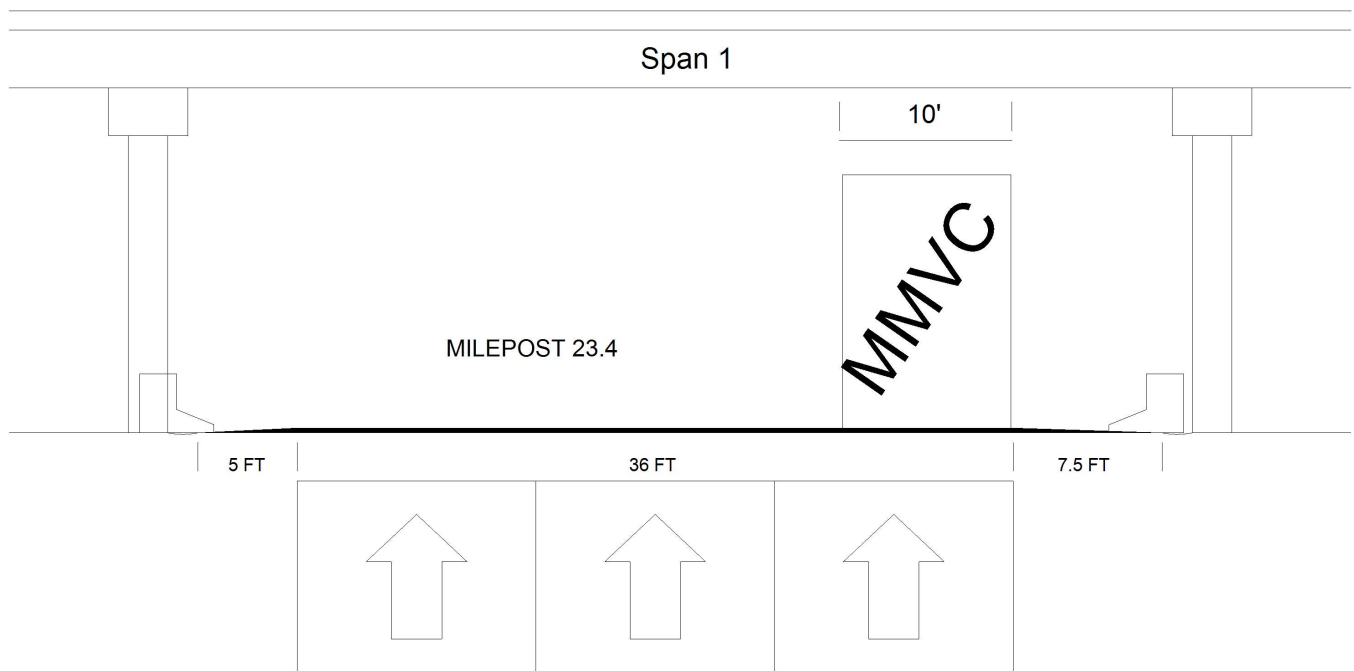
Roadway 1		Direction of Traffic	North
Distance to Left Rail	5FT	Distance to Right Rail	7.5FT
Distance to Left Toe of Slope		Distance to Left Bent	6.5FT
Distance to Right Toe of Slope		Distance to Right Bent	9FT
MMVC	15.83 Ft at Beam 12, 0 FT from FROM LEFT EDGE OF ROADWAY		
MVC	15.58 Ft at Beam 12, 20 FT from FROM LEFT EDGE OF ROADWAY		

VERIFIED BY ERIC PATTERSON ON 8-5-2014

<b>Title</b> NORTHBOUND UNDERCLEARANCE	<b>Description</b> NORTHBOUND UNDERCLEARANCE
---	---

<b>Bridge No:</b> 350073	<b>Drawn By:</b> DCR	<b>Date:</b> 8/25/08	<b>File Name:</b> S0286000128
--------------------------	----------------------	----------------------	-------------------------------

# Bridge Inspection Field Sketch



Roadway 1		Direction of Traffic	South
Distance to Left Rail	5FT	Distance to Right Rail	7.5FT
Distance to Left Toe of Slope		Distance to Left Bent	6.5FT
Distance to Right Toe of Slope		Distance to Right Bent	9FT
MMVC	16 Ft at Beam 12, 0 FT from FROM RIGHT EDGE OF ROADWAY		
MVC	15.83 Ft at Beam 12, 0 FT from FROM LEFT EDGE OF ROADWAY		

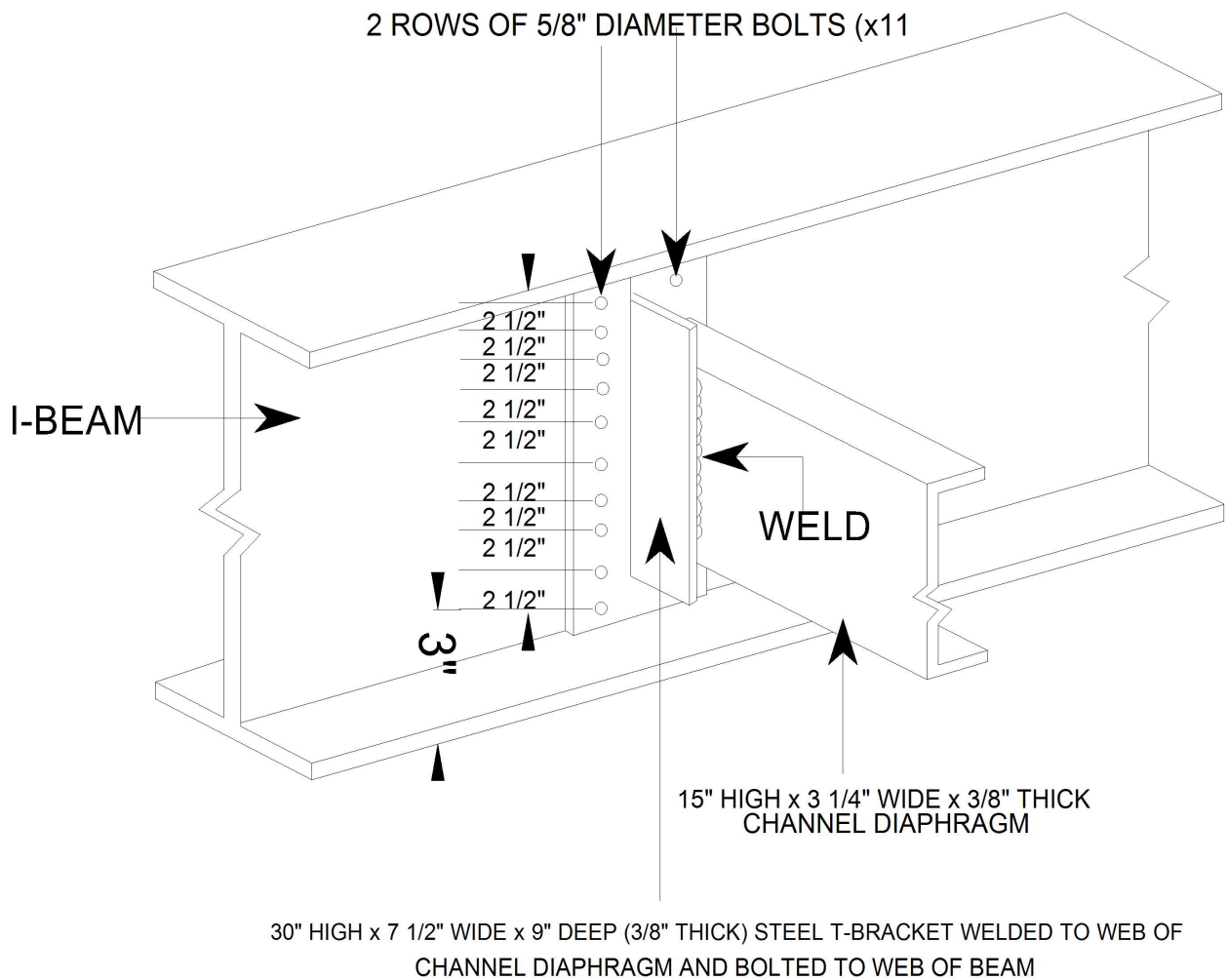
VERIFIED BY ERIC PATTERSON ON 8-5-2014

<b>Title</b> SOUTHBOUND UNDERCLEARANCE		<b>Description</b> SOUTHBOUND UNDERCLEARANCE	
<b>Bridge No:</b> 350073	<b>Drawn By:</b> DCR	<b>Date:</b> 8/25/08	<b>File Name:</b> S0286000129

# Bridge Inspection Field Sketch

## DIAPHRAGM DETAILS

LOCATIONS : 1/3 POINTS OF SPANS



VERIFIED BY ERIC PATTERSON ON 8-5-2014

Title  
DIAPH.

Description  
DETAILS

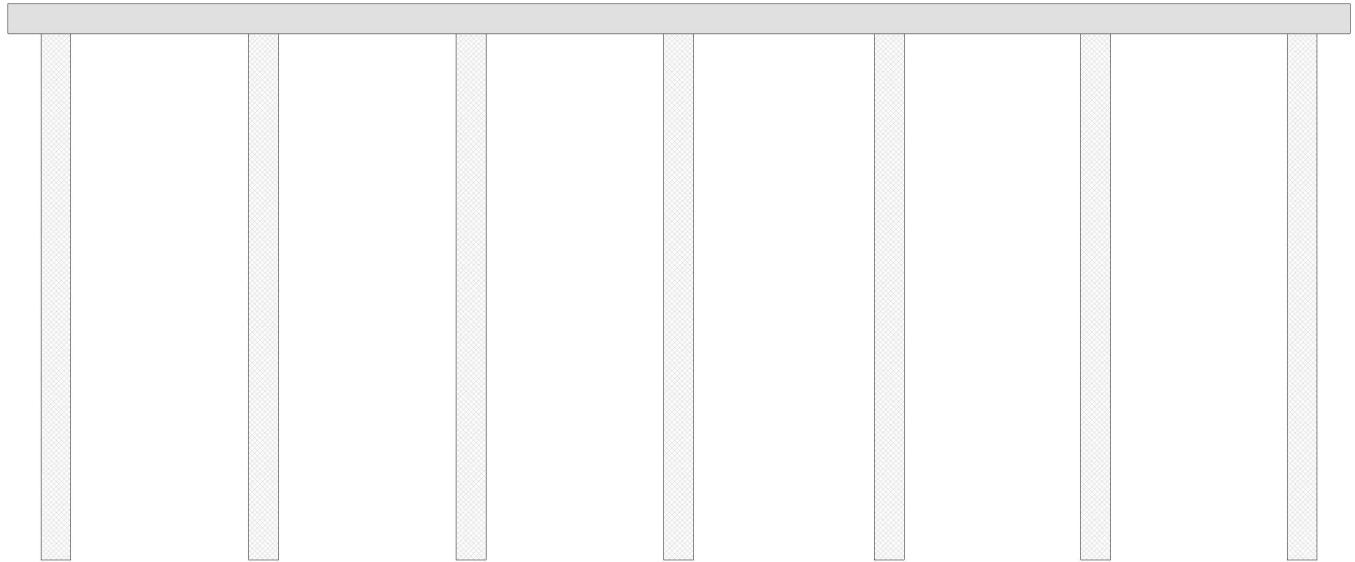
Bridge No: 350073

Drawn By: DEREK RICKUS

Date: 8/15/2012

File Name: S0142001851

# Bridge Inspection Field Sketch



<b>Cap Information</b>			Material Cast-in-Place Concrete							
Length	Width	Height	Left Overhang	Right Overhang	Left Beam to End of Cap.	Right Beam to End of Cap.				
112.082 ft.	3.000 ft.	2.500 ft.	4.000 ft.	4.000 ft.	1.833 ft.	1.833 ft.				
<b>Subcap Information</b>			Material							
Length	Width	Height	Left Overhang	Right Overhang	Left Pile to Splice.					
<b>Sill Information</b>			Material							
Length	Width	Height								
<b>Pile #</b>	<b>Material</b>	<b>Spacing</b>	<b>Width/Dia.</b>	<b>Height</b>	<b>Length</b>	<b>Orientation</b>	<b>Driven?</b>	<b>Replacement?</b>	<b>Removed?</b>	<b>Collar?</b>
1	Concrete	17.333 ft.	2.5 ft.	3.0 ft.		Vertical	No	No	No	No
2	Concrete	17.333 ft.	2.5 ft.	3.0 ft.		Vertical	No	No	No	No
3	Concrete	17.333 ft.	2.5 ft.	3.0 ft.		Vertical	No	No	No	No
4	Concrete	17.583 ft.	2.5 ft.	3.0 ft.		Vertical	No	No	No	No
5	Concrete	17.250 ft.	2.5 ft.	3.0 ft.		Vertical	No	No	No	No
6	Concrete	17.250 ft.	2.5 ft.	3.0 ft.		Vertical	No	No	No	No
7	Concrete		2.5 ft.	3.0 ft.		Vertical	No	No	No	No
<b>VERIFIED BY ERIC PATTERSON ON 8-5-2014</b>										
<b>Bent/Abutment #:</b> 1			<b>Similar Bents:</b> 2 AND 3							

<b>Title</b>				<b>Description</b>				
SUBSTRUCTURE				DETAILS				
<b>Bridge No:</b> 350073		<b>Drawn By:</b> DEREK RICKUS			<b>Date:</b> 8/15/2012		<b>File Name:</b> S0142001852	



EAST APPROACH



WEST APPROACH



ABUT. 2



BENT 2



LOOKING NORTH



LOOKING SOUTH



BENT 3



ABUT. 2